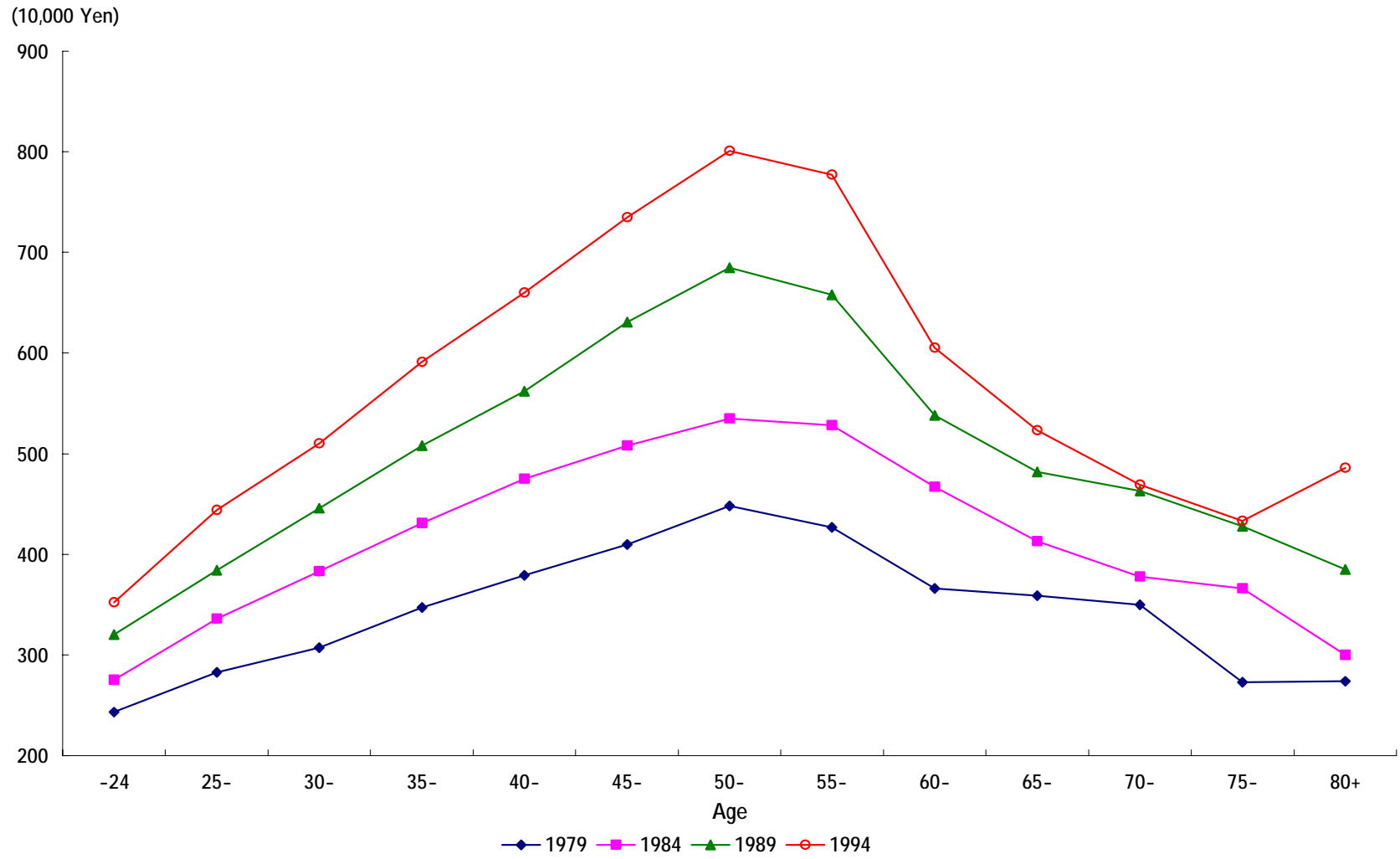
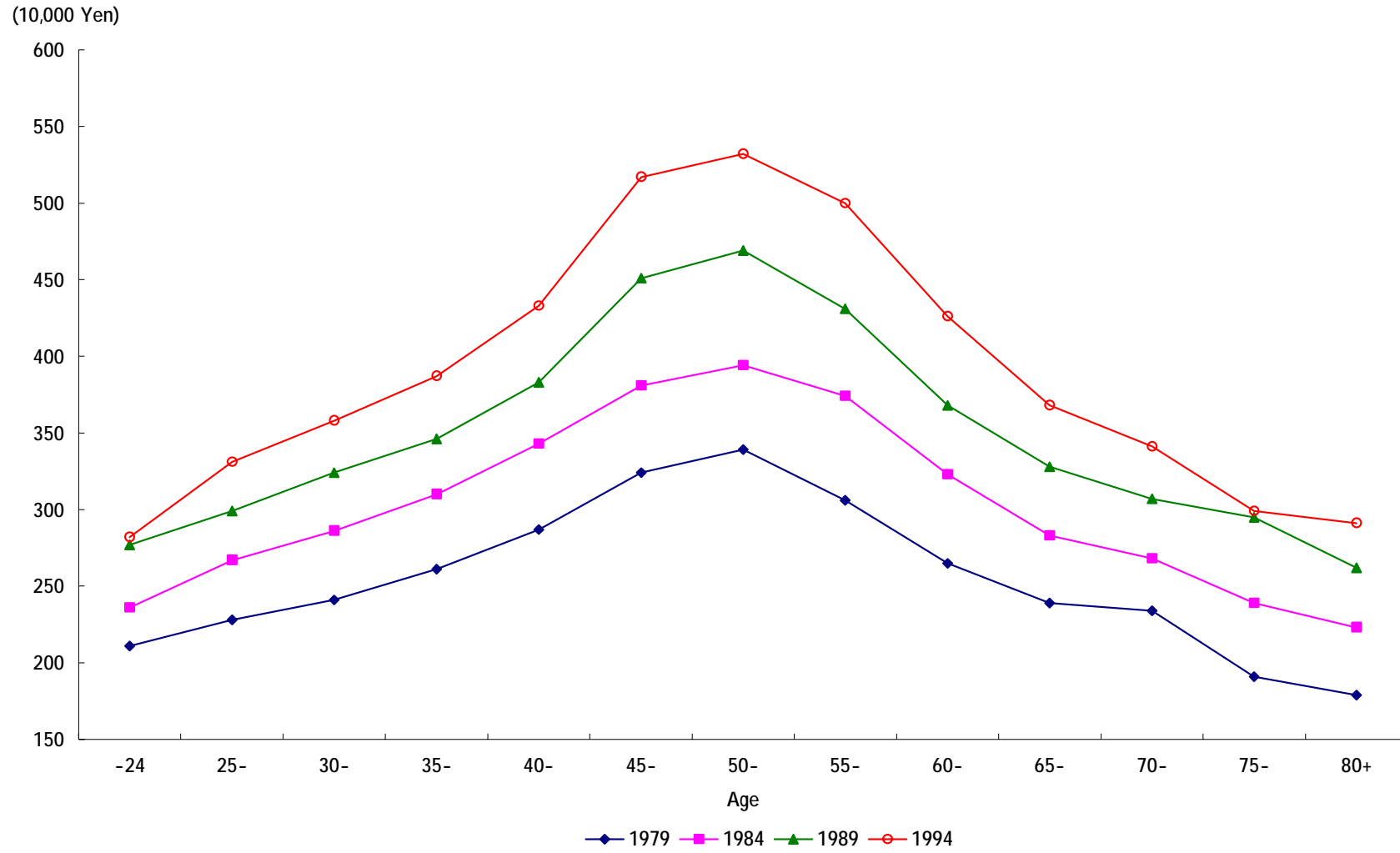


Fig.1 Age profile of disposable income (for all households)



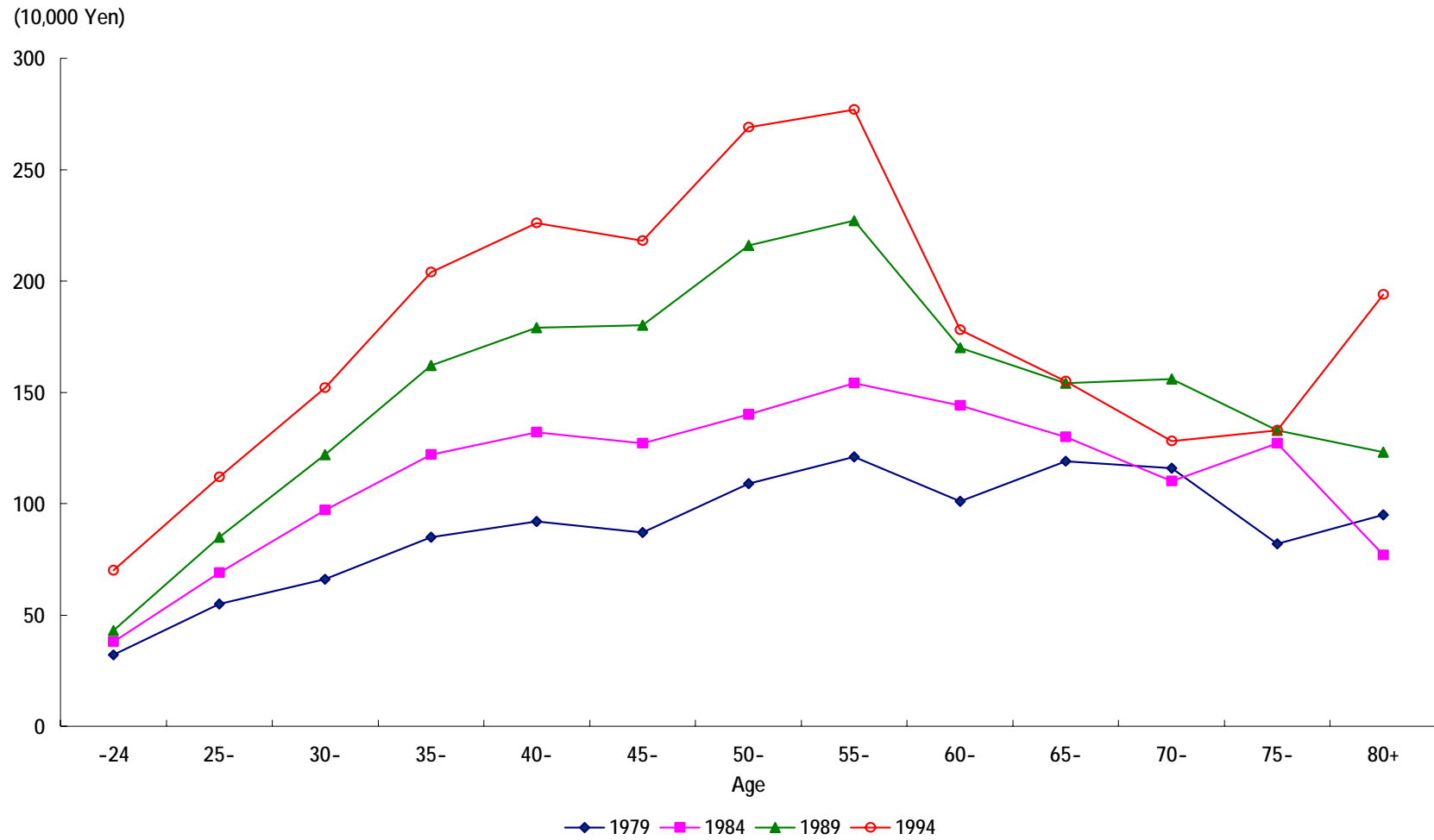
Source: NSFIE for 1979, 1984, 1989 and 1994.

Fig.2 Age profile of consumption (for all households)



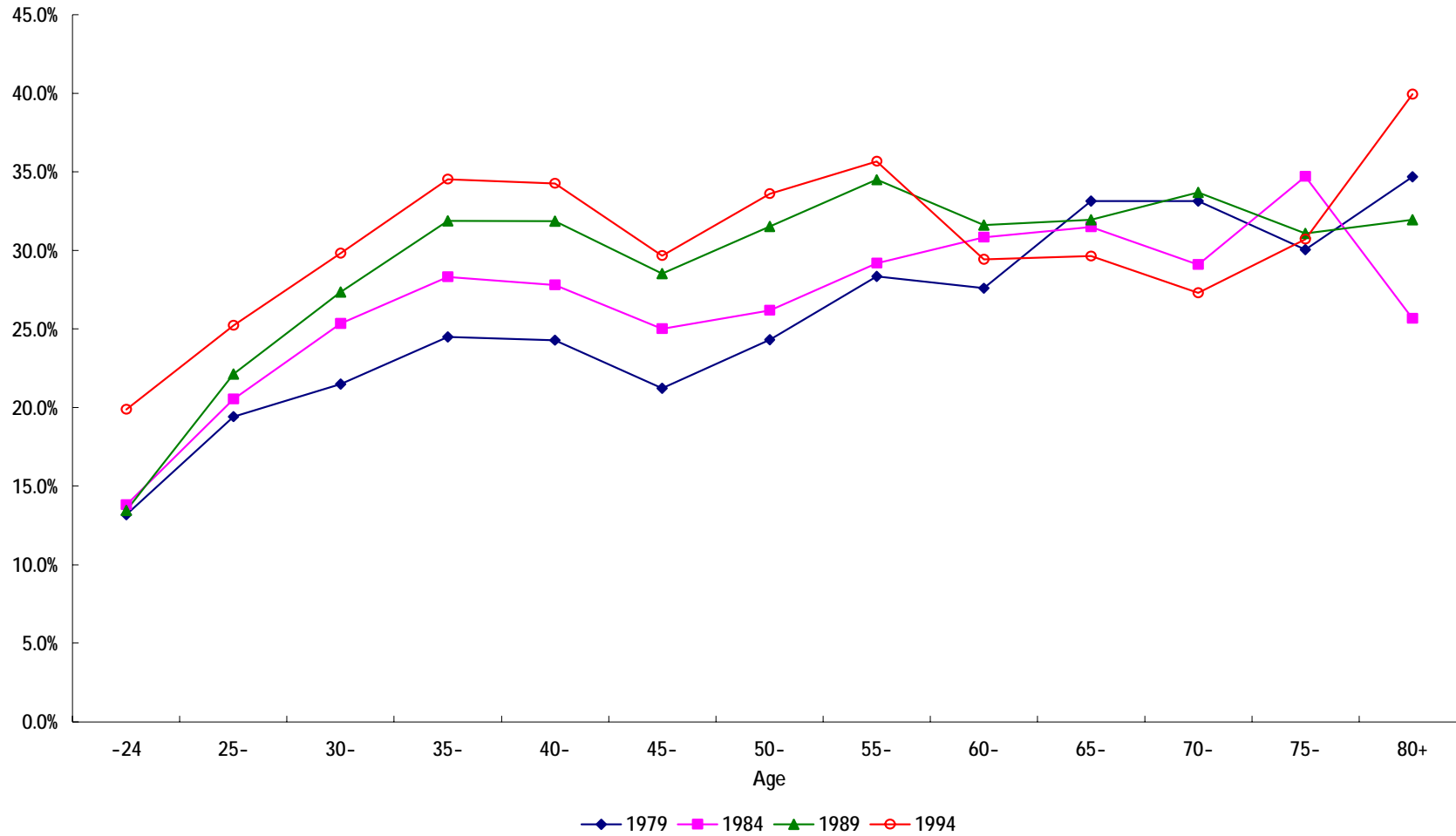
Source: NSFIE for 1979, 1984, 1989 and 1994.

Fig.3 Age profile of saving (for all households)



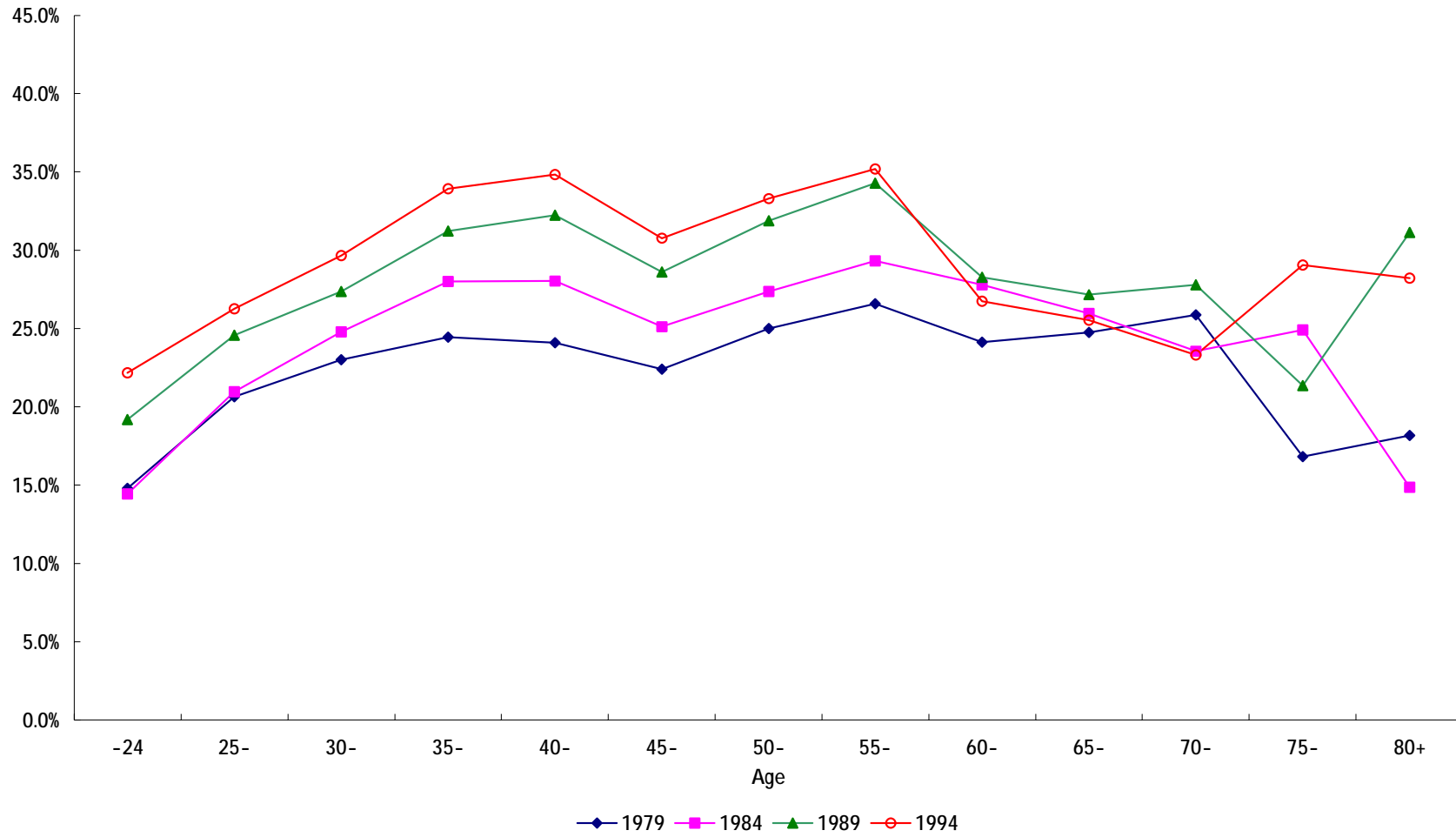
Source: NSFIE for 1979, 1984, 1989 and 1994.

Fig.4 Age profile of mean saving rates (for all households)



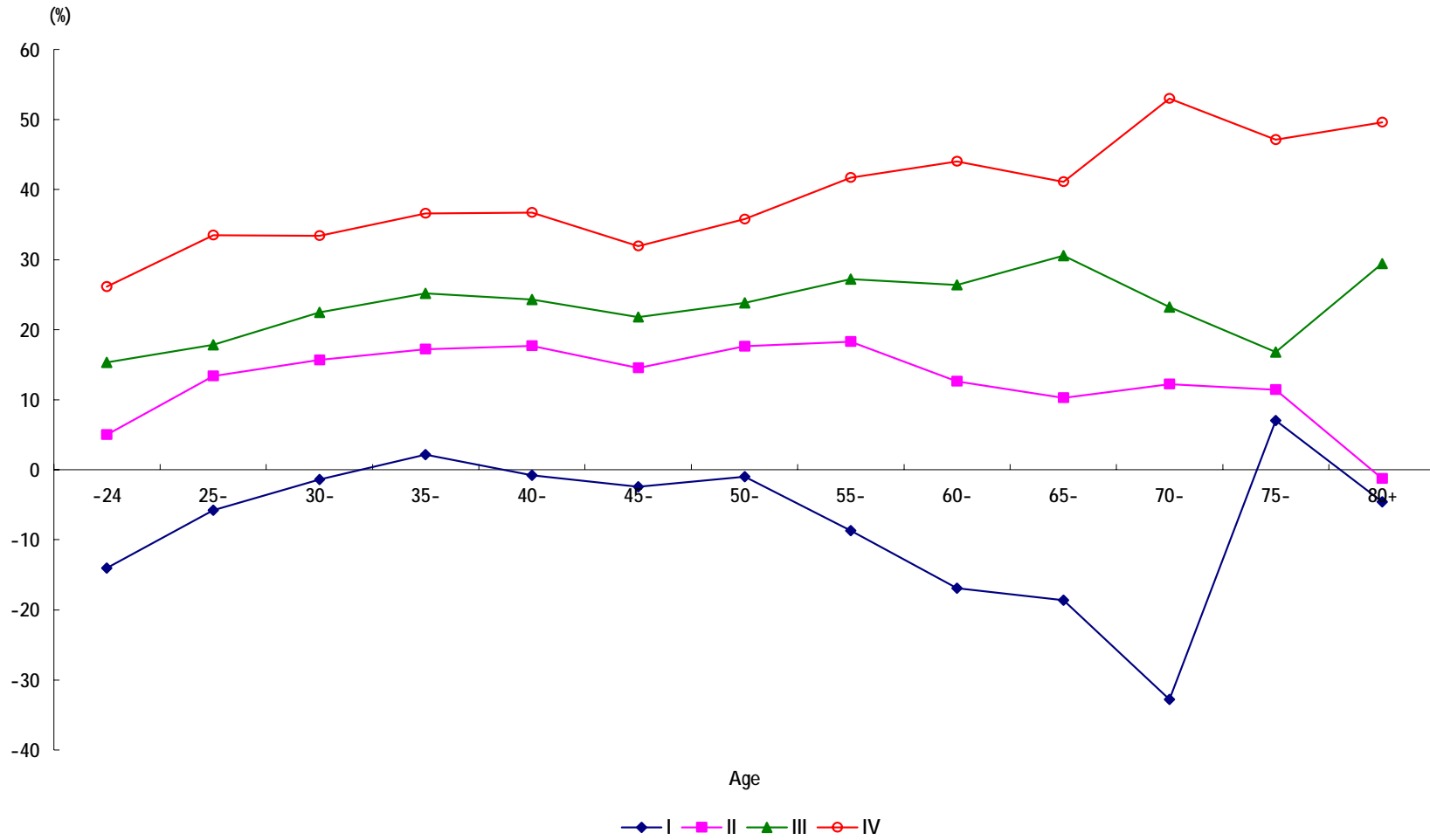
Source: NSFIE for 1979, 1984, 1989 and 1994.

Fig.5 Age profile of median saving rates (for all households)



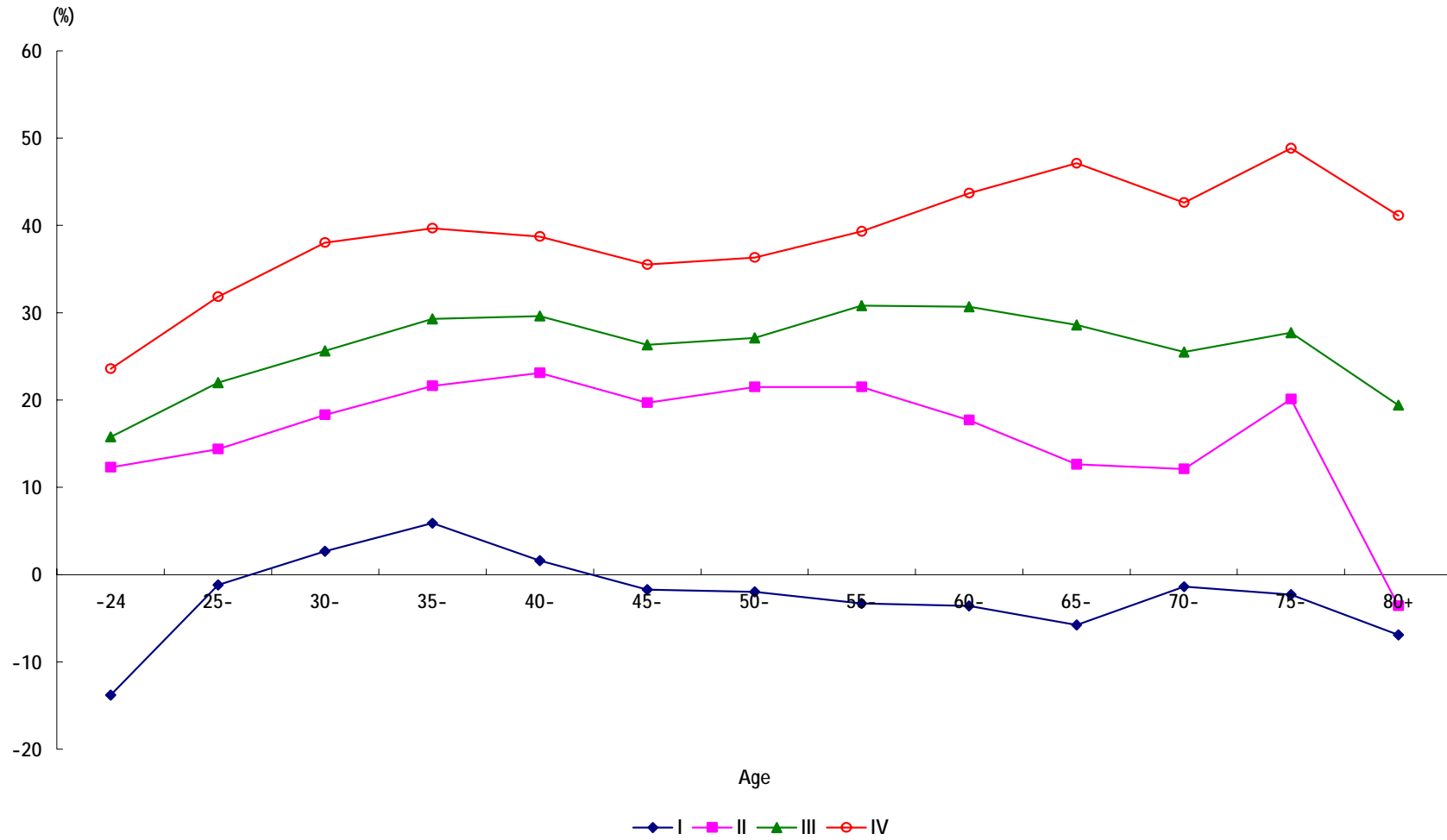
Source: NSFIE for 1979, 1984, 1989 and 1994.

Fig.6 Age profile of saving rates by income class in 1979



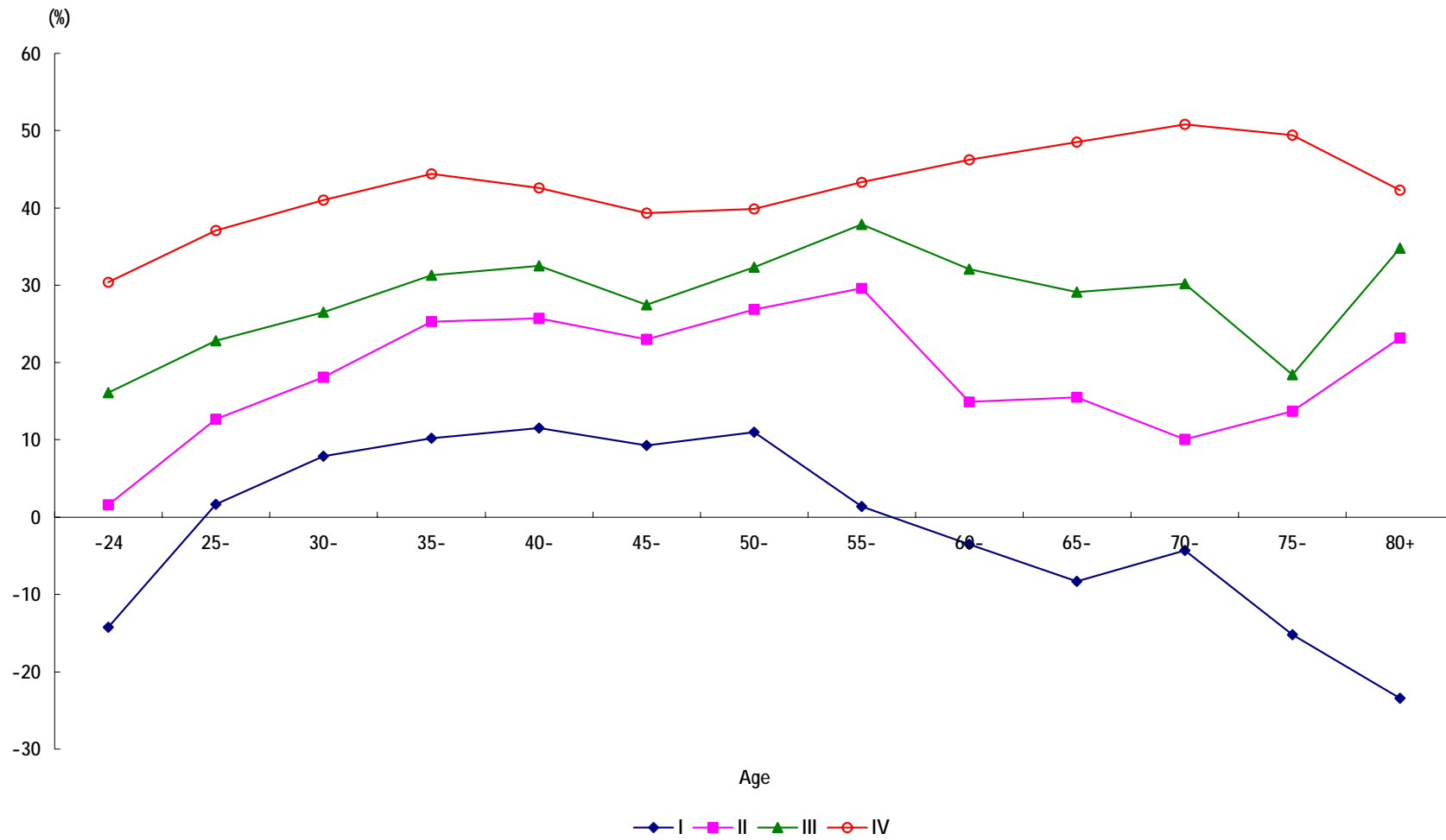
Source: NSFIE for 1979.

Fig.7 Age profile of saving rates by income class in 1984



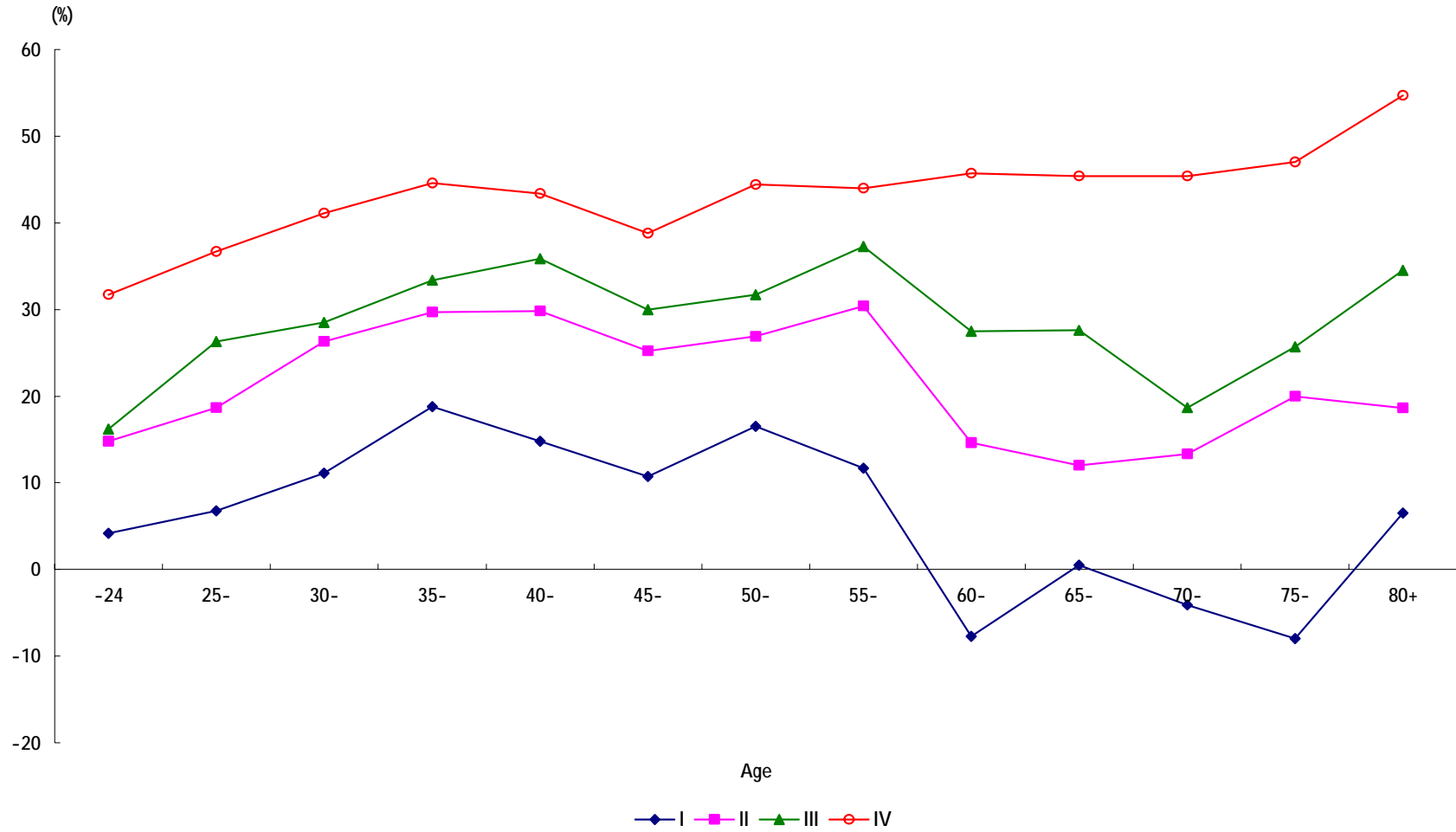
Source: NSFIE for 1984.

Fig.8 Age profile of saving rates by income class in 1989



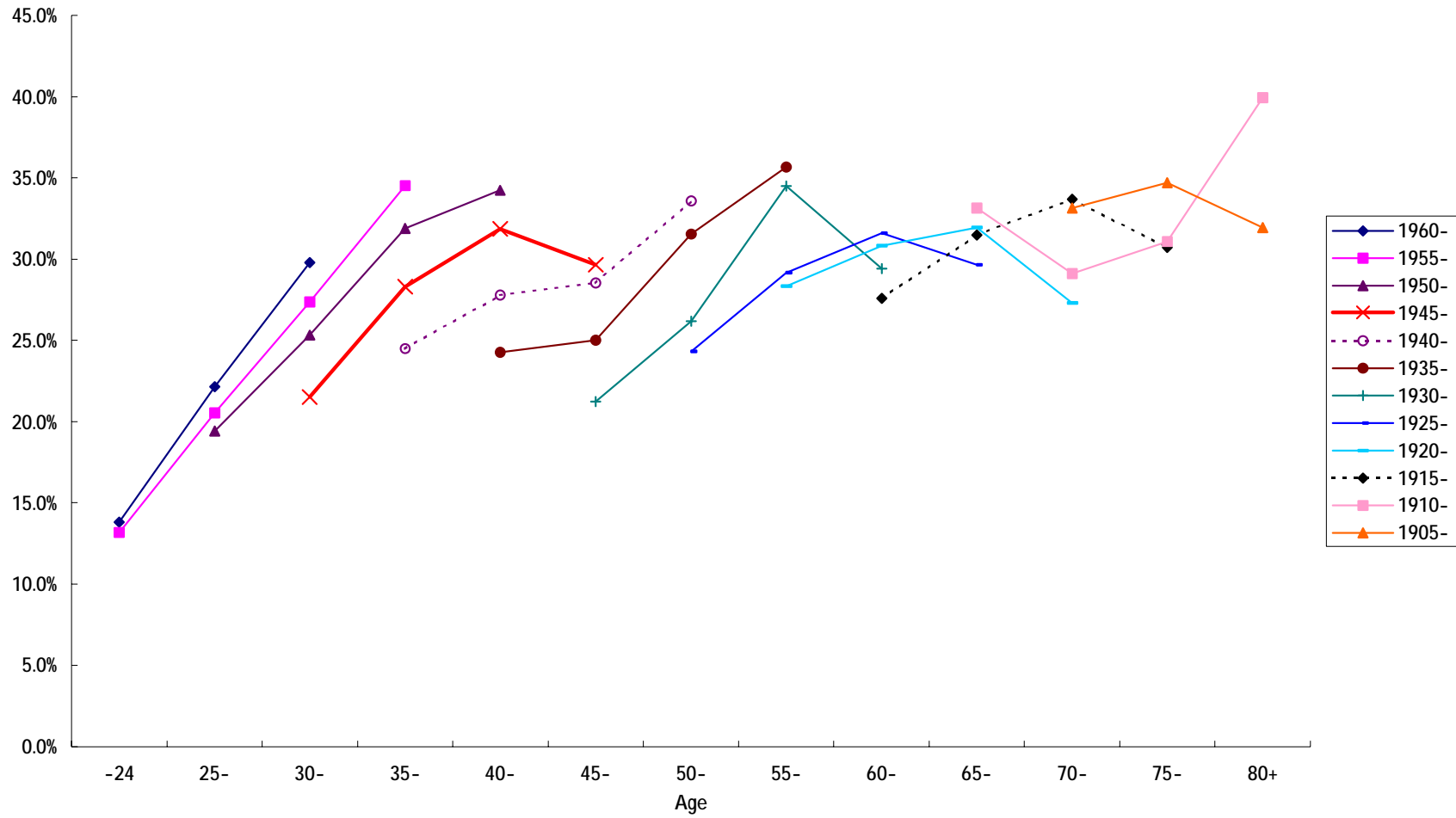
Source: NSFIE for 1989.

Fig.9 Age profile of saving rates by income class in 1994



Source: NSFIE for 1994.

Fig.10 Saving rates by cohort (mean)



Source: NSFIE for 1979, 1984, 1989 and 1994.

Fig.11 Saving rates by cohort (median)

Source: NSFIE for 1979, 1984, 1989 and 1994.

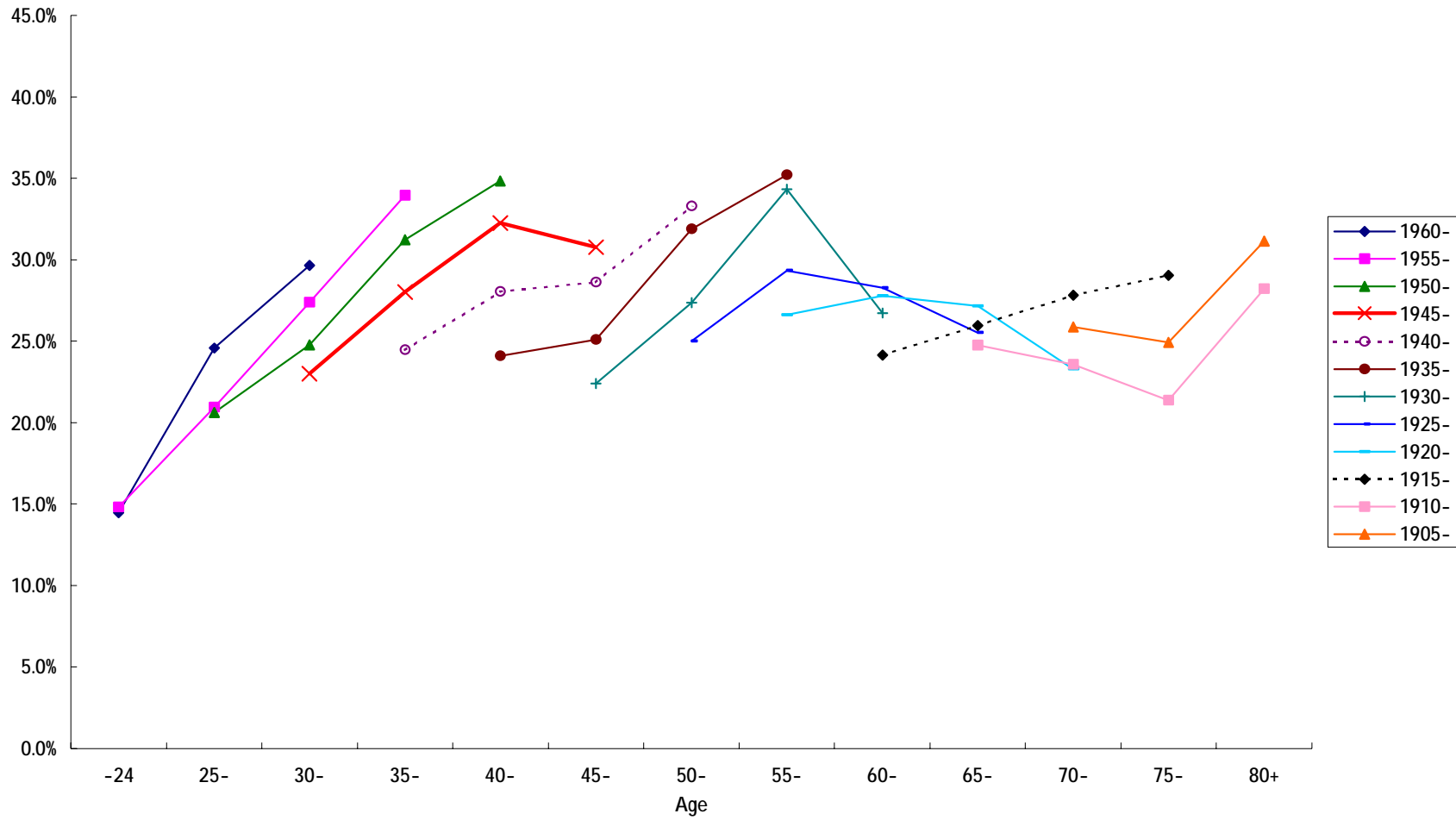
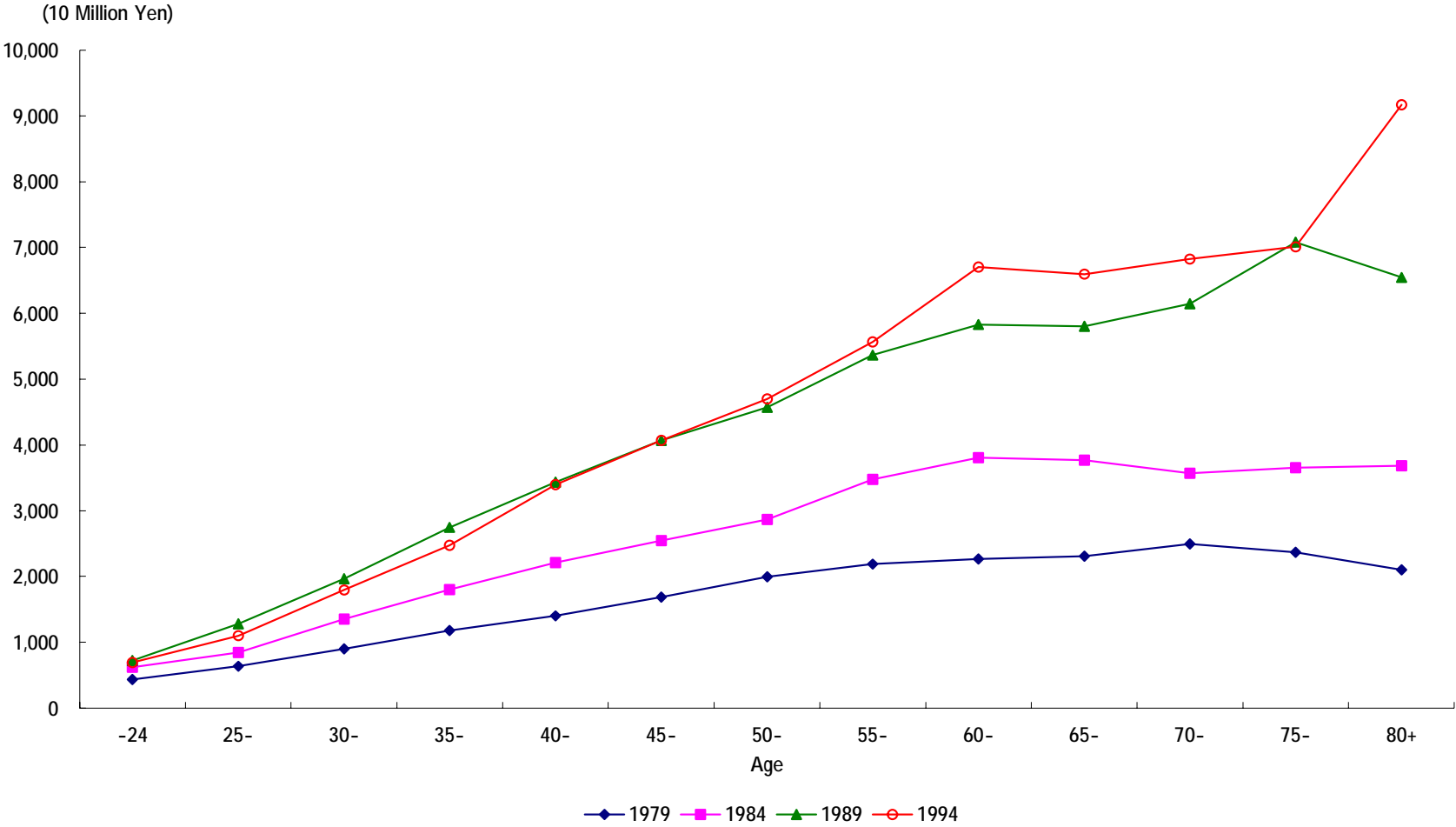


Fig.12 Net worth by home ownership (for all households)



Source: NSFIE for 1979, 1984, 1989 and 1994.

Fig.13 Net financial assets by home ownership (for all households)

Source: NSFIE for 1979, 1984, 1989 and 1994.

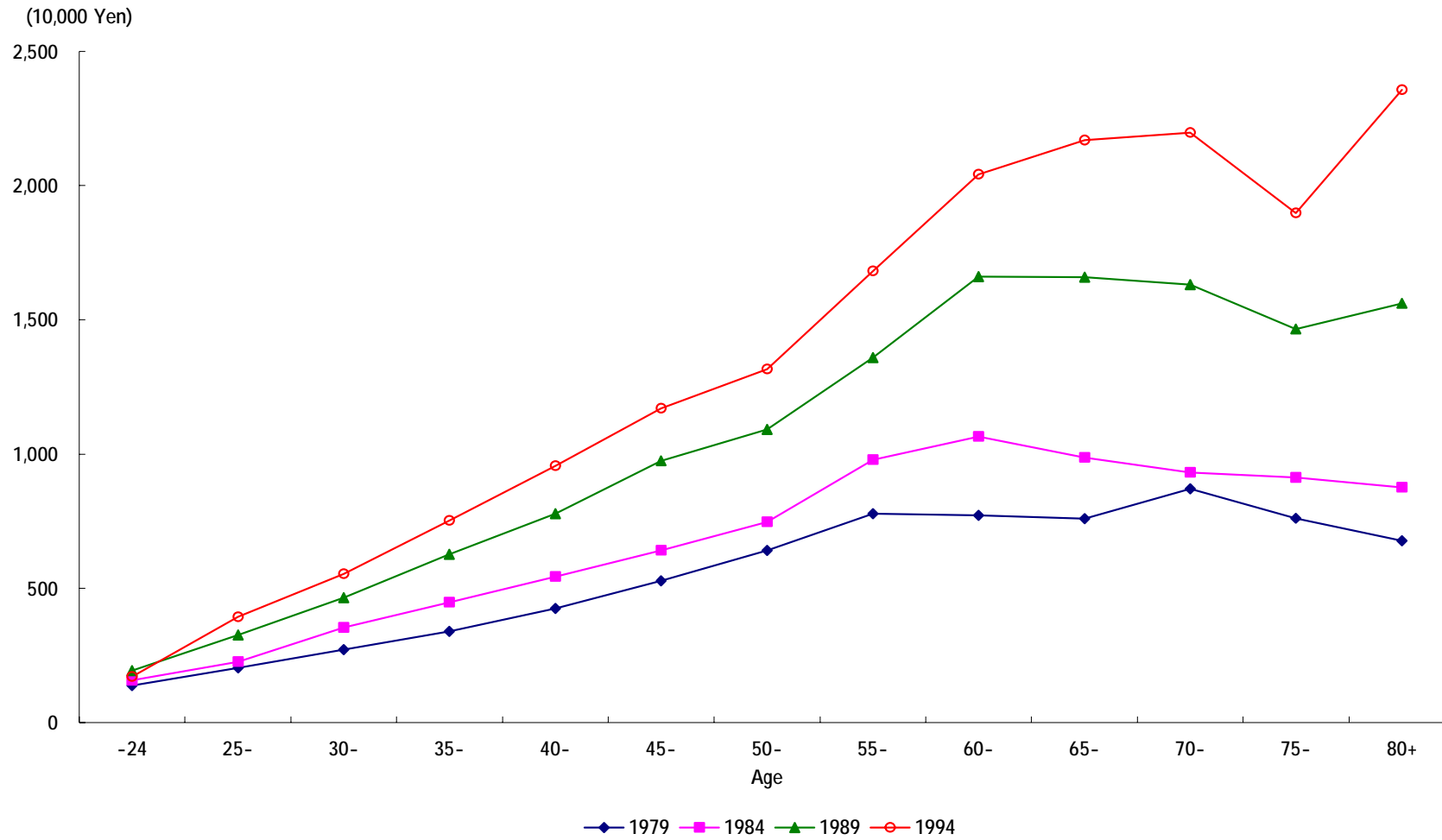
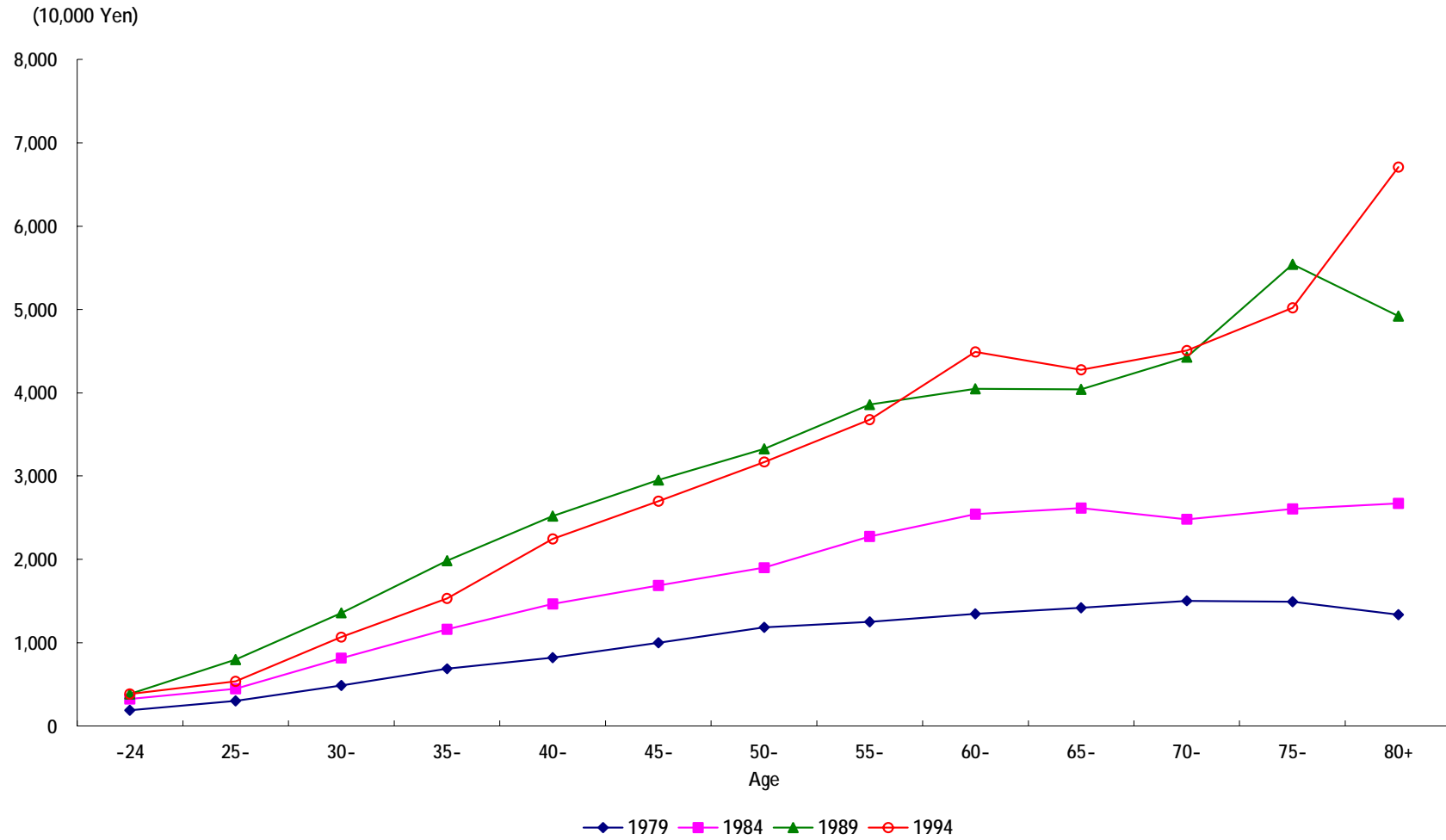


Fig.14 Net housing assets (for all households)



Source: NSFIE for 1979, 1984, 1989 and 1994.

Fig.15 Net worth by birth year (for all households)

Source: NSFIE for 1979, 1984, 1989 and 1994.

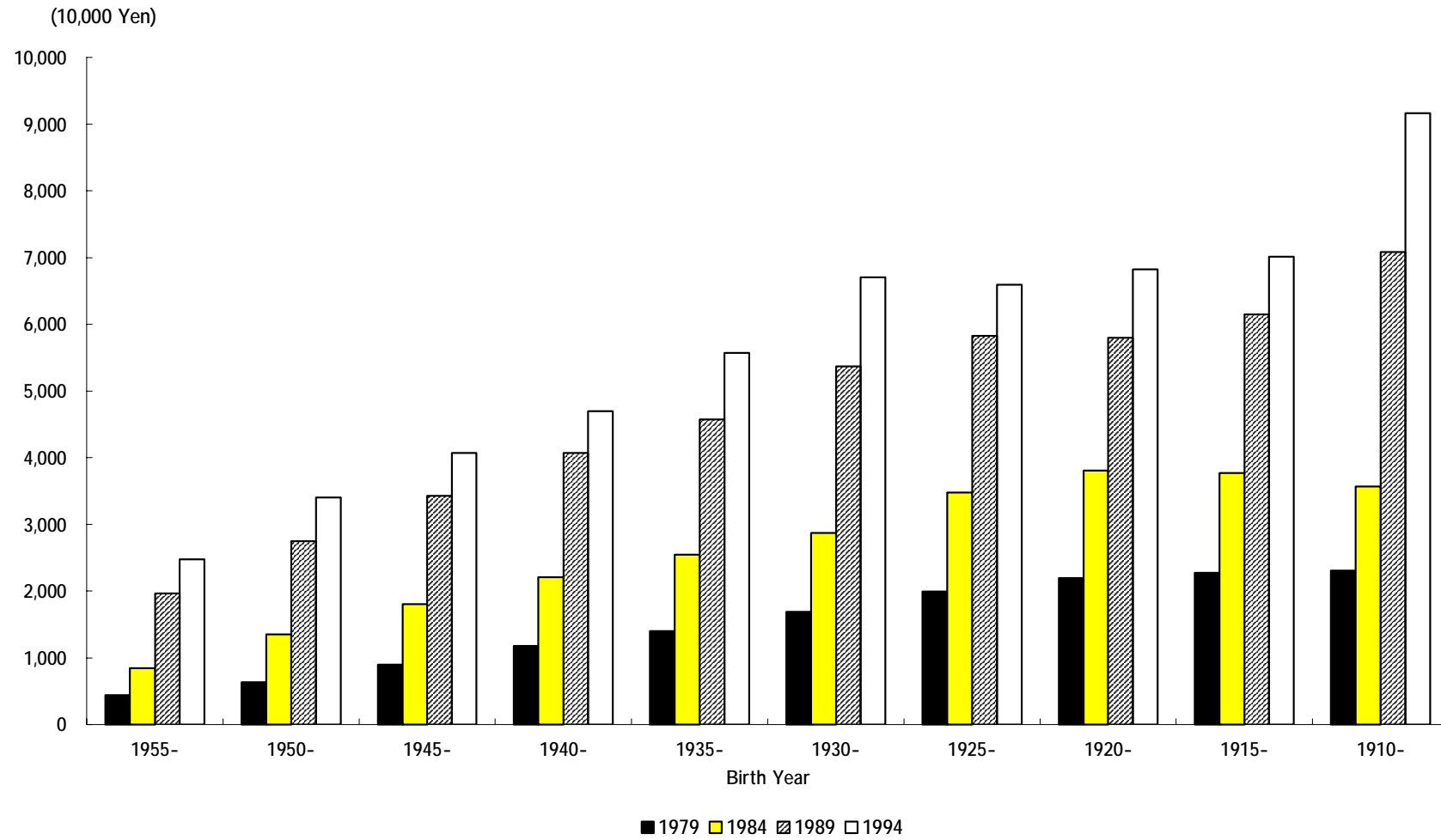
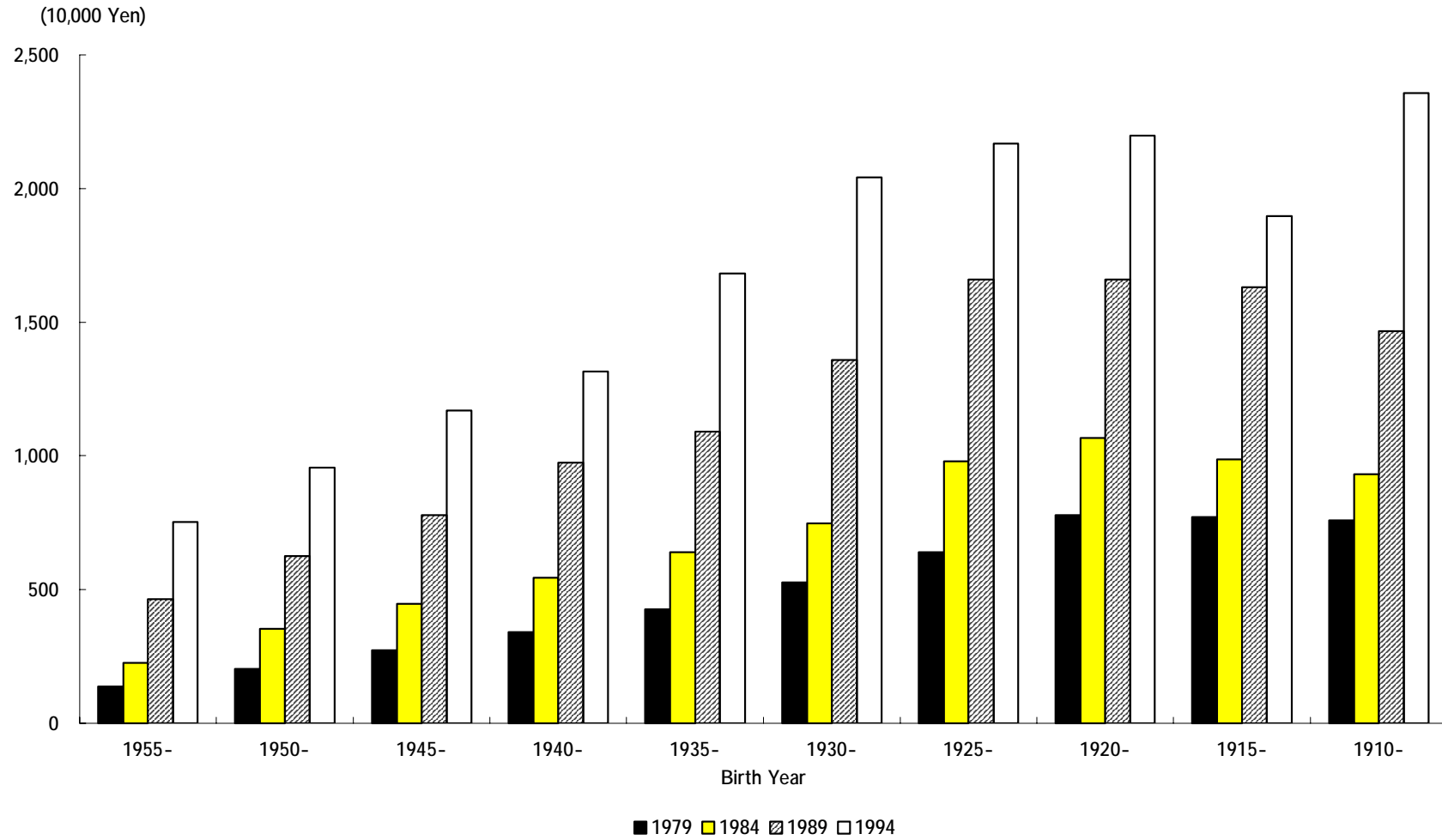


Fig.16 Net financial assets by birth year (for all households)



Source: NSFIE for 1979, 1984, 1989 and 1994.

Fig.17 Distribution of net worth (for all households)

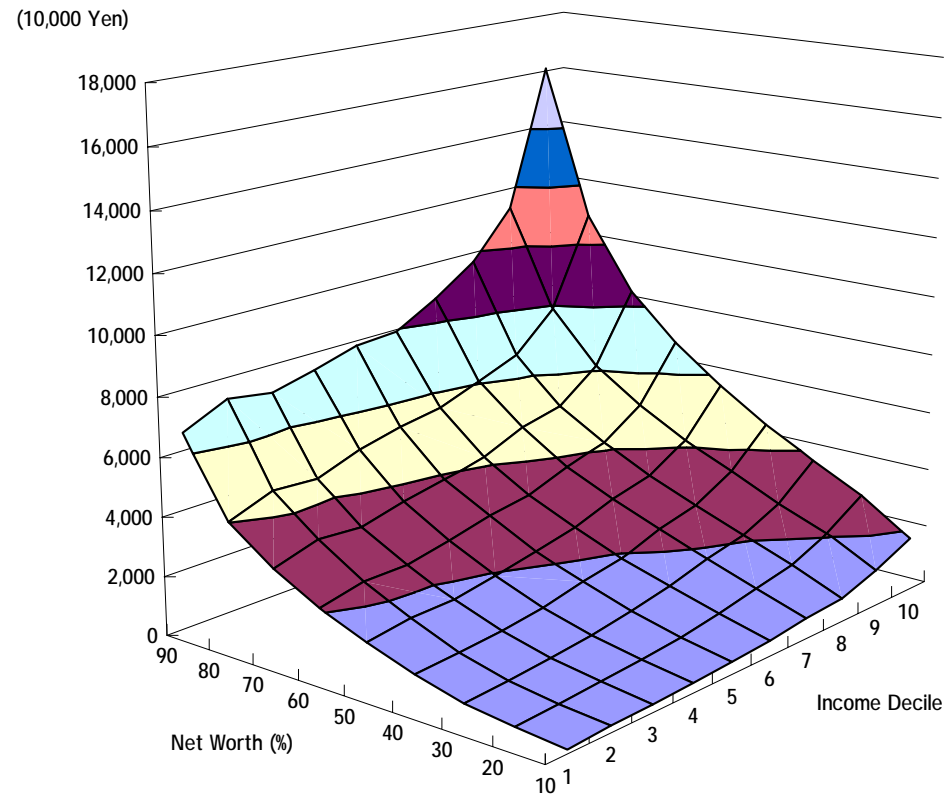


Fig.18 Distribution of financial assets (for all households)

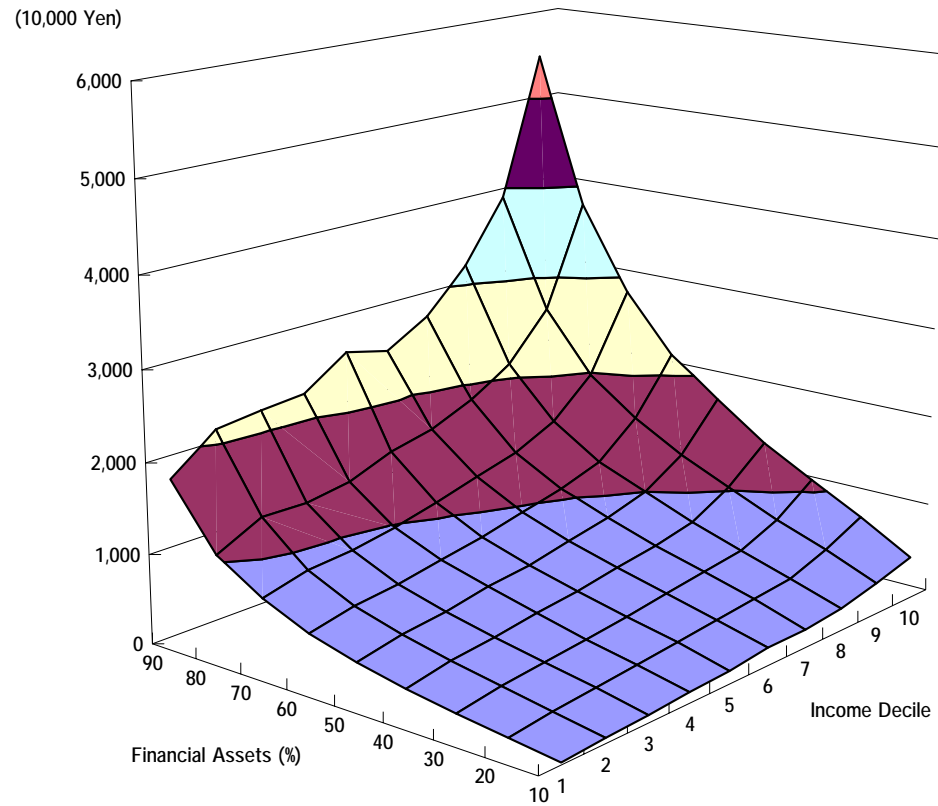


Fig.19 Social security wealth over life cycle

